



District 5 Code Analysis - FY18

Data extracted for Code cases opened between October 1, 2017 - Sept 30, 2018

All Cases

Reported Complaint Type	Total	Commercial	Neighborhood	Multifamily
Land Use	666	64	498	104
Property Abatement	1,167	145	916	106
Structure Condition	354	83	163	108
Work Without Permit	80	13	56	11
SWS Chp 15	6	1	4	1
Total	2,273	306	1,637	330
Total Percent of Citywide Complaints	7.1%	4.2%	9.1%	4.8%

Repeat Offenders, Short Term Rentals, and Rooming and Boarding Homes

**Filtering cases by complaints occurring at Repeat Offender Properties (ROP), Short Term Rentals (STR), or Rooming and Boarding Homes (RBH). Austin Code categorizes them as Operating Licenses types.*

Case Code	Total	Commercial	Neighborhood	Multifamily
Repeat Offender Properties	34	23	7	4
Short Term Rentals	126	4	108	14
Rooming and Boarding Homes	10	-	9	1
Total	170	27	124	19
Total Percent of Citywide Complaints	0.5%	0.4%	0.7%	0.3%

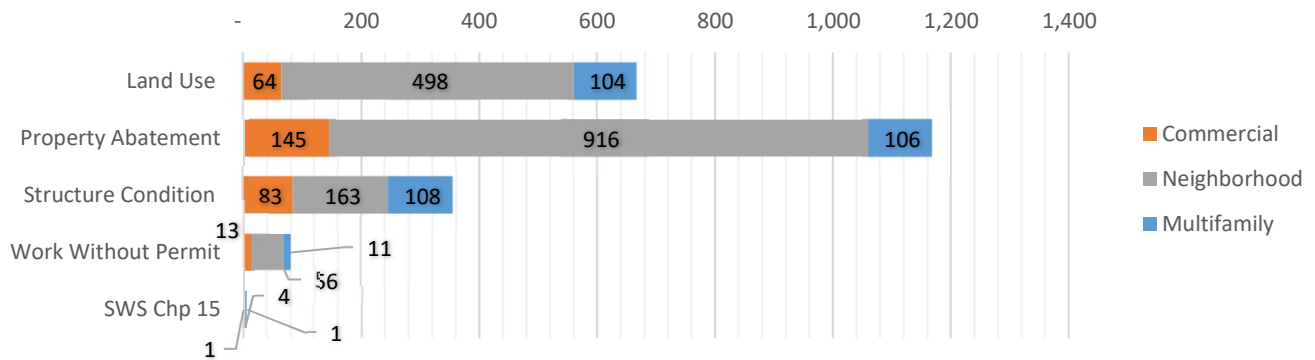
Reported Complaint Type	Total	ROP	STR	RBH
Land Use	666	3	124	8
Property Abatement	1,167	6	1	-
Structure Condition	354	25	-	2
Work Without Permit	80	-	1	-
SWS Chp 15	6	-	-	-
Total	2,273	34	126	10
Total Percent of Citywide Complaints	7.1%	1.2%	7.5%	10.0%

Council District Matrix - All Cases

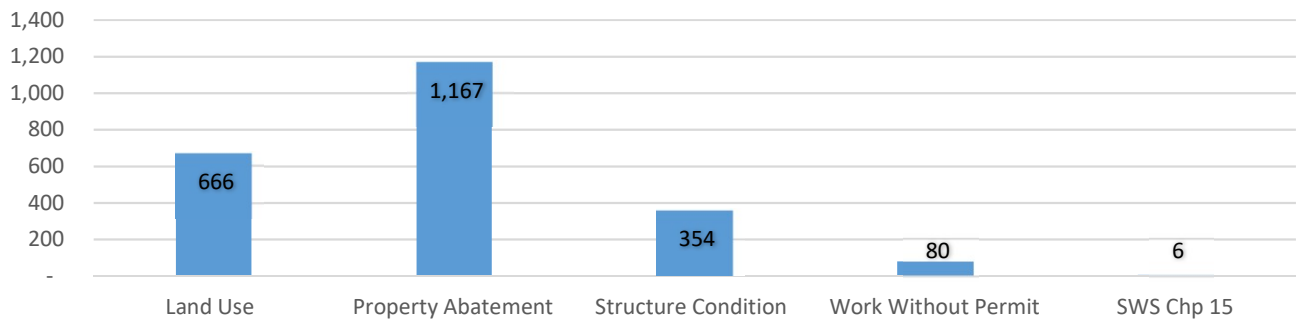
This matrix shows your Council District's percentage of total complaints in comparison with others.

Council District	% Total	% Commercial	% Neighborhood	% Multifamily
District 1	13.6%	9.2%	15.0%	14.7%
District 2	11.4%	12.6%	12.3%	7.9%
District 3	13.3%	23.4%	9.9%	11.8%
District 4	15.3%	8.4%	13.0%	28.7%
District 5	7.1%	4.2%	9.1%	4.8%
District 6	3.1%	3.1%	3.9%	1.1%
District 7	8.1%	10.0%	8.7%	4.3%
District 8	3.9%	1.8%	6.0%	0.7%
District 9	16.9%	21.4%	12.7%	23.0%
District 10	7.0%	5.9%	9.0%	2.9%

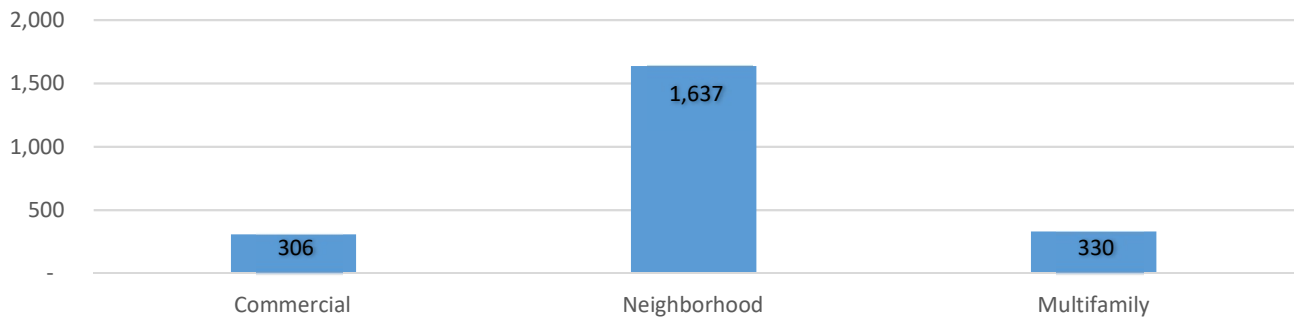
Complaint Types by Team



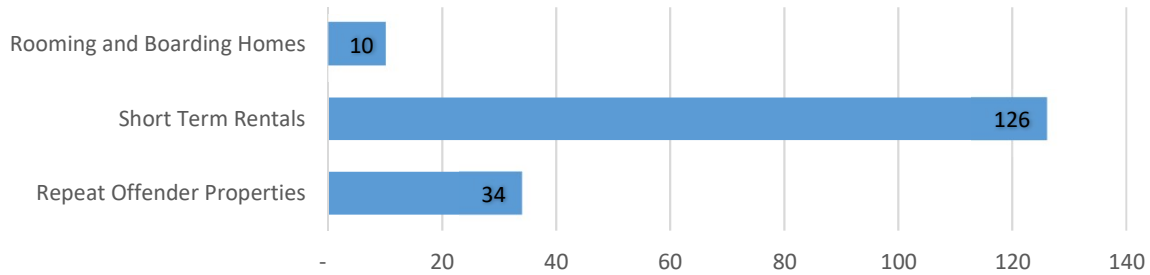
Cases by Complaint Type



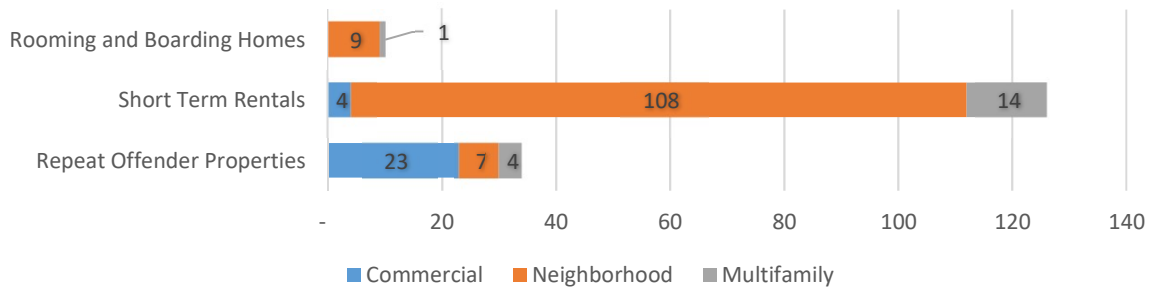
Cases by Team



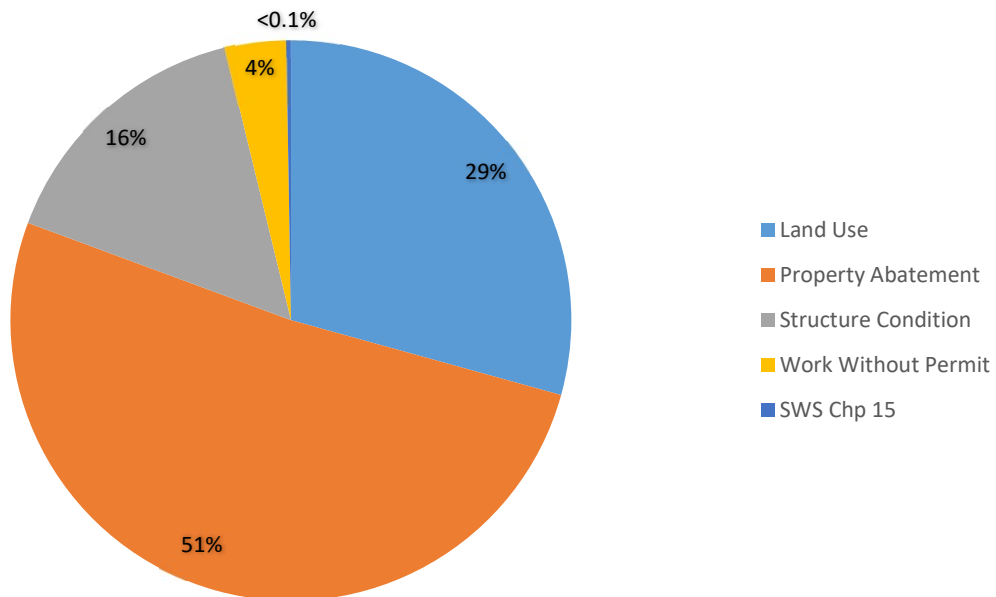
Cases by Operating License Types



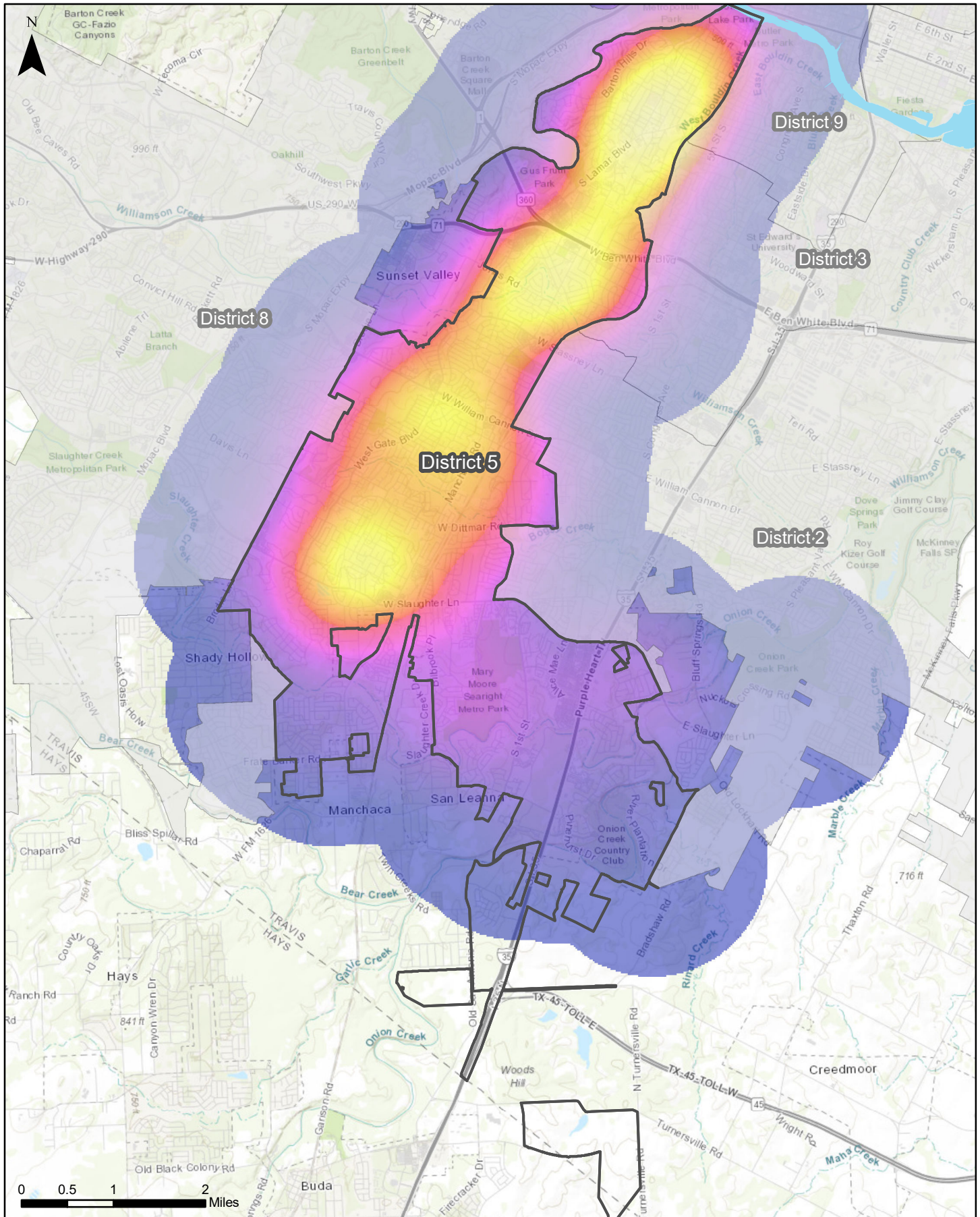
Operating License Cases by Team



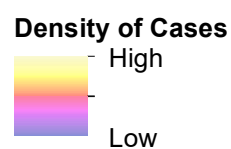
Operating License Complaint Types



Council District 5



This map examines the density of Code Cases opened in District 5



AUSTIN CODE
DEPARTMENT

Map generated on:
6/24/2019